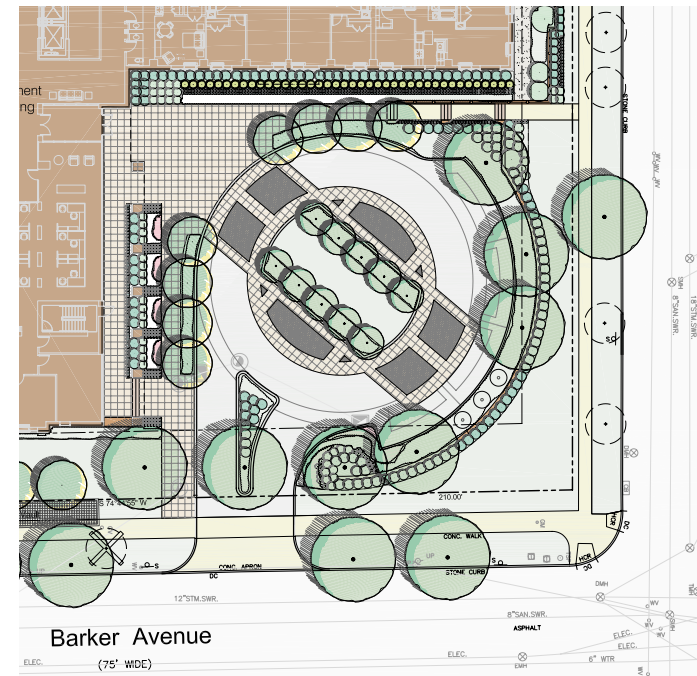
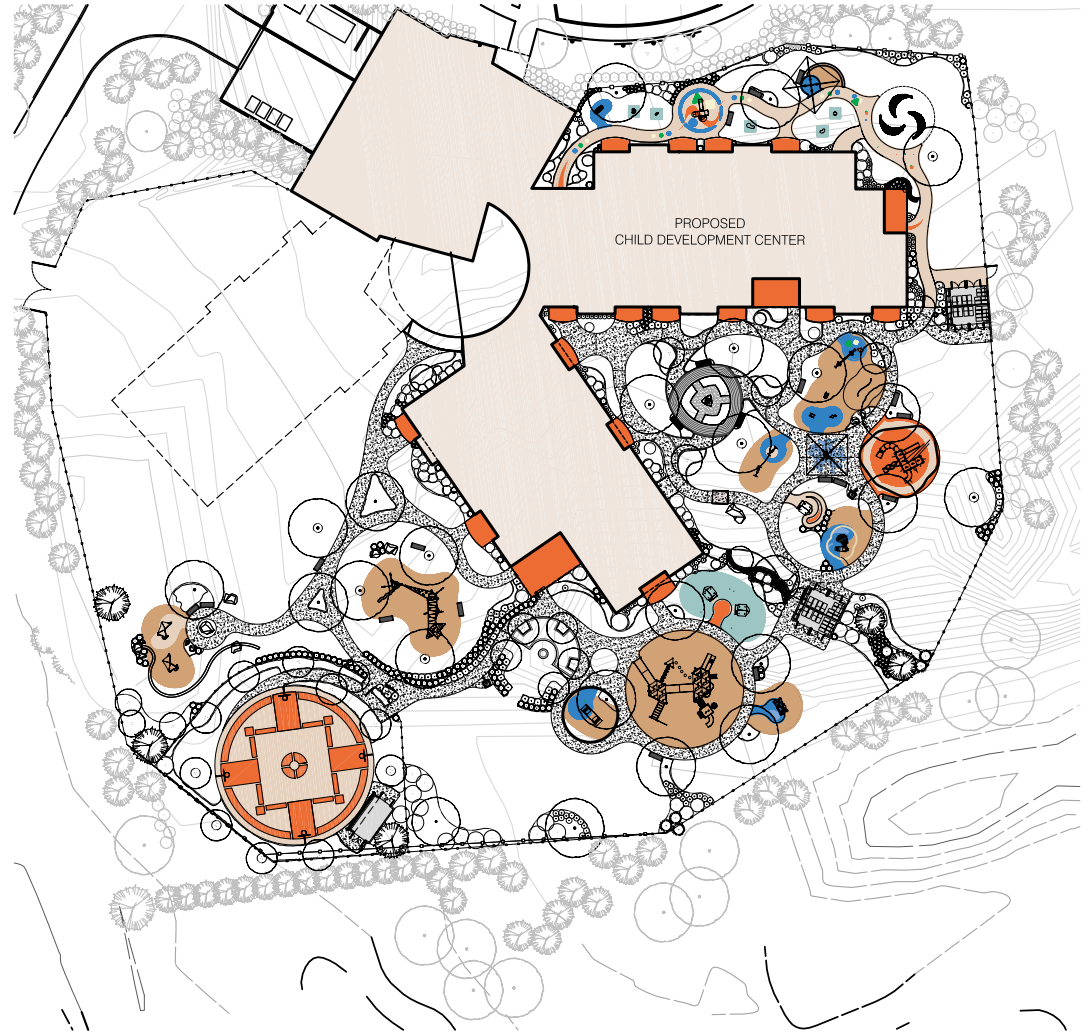


Architectural Rendering by Perkins Eastman

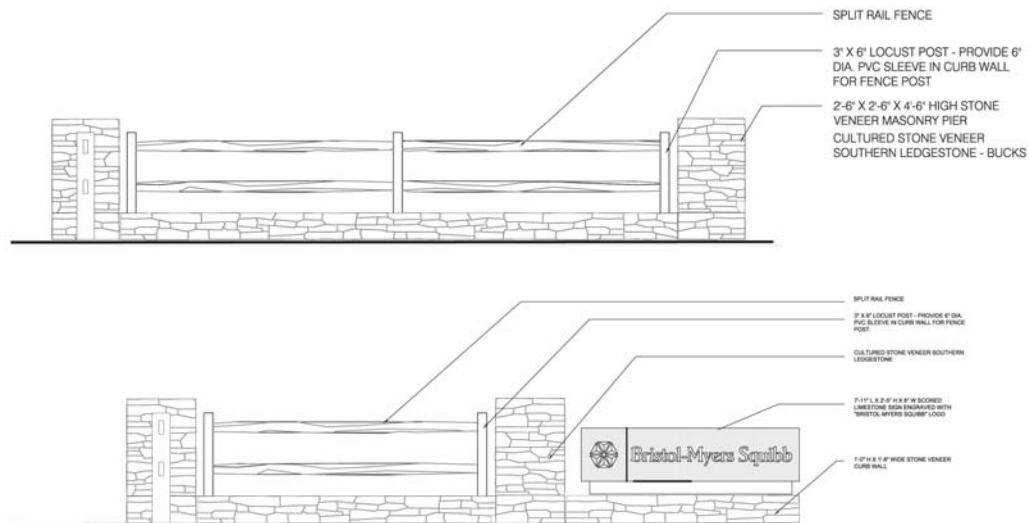
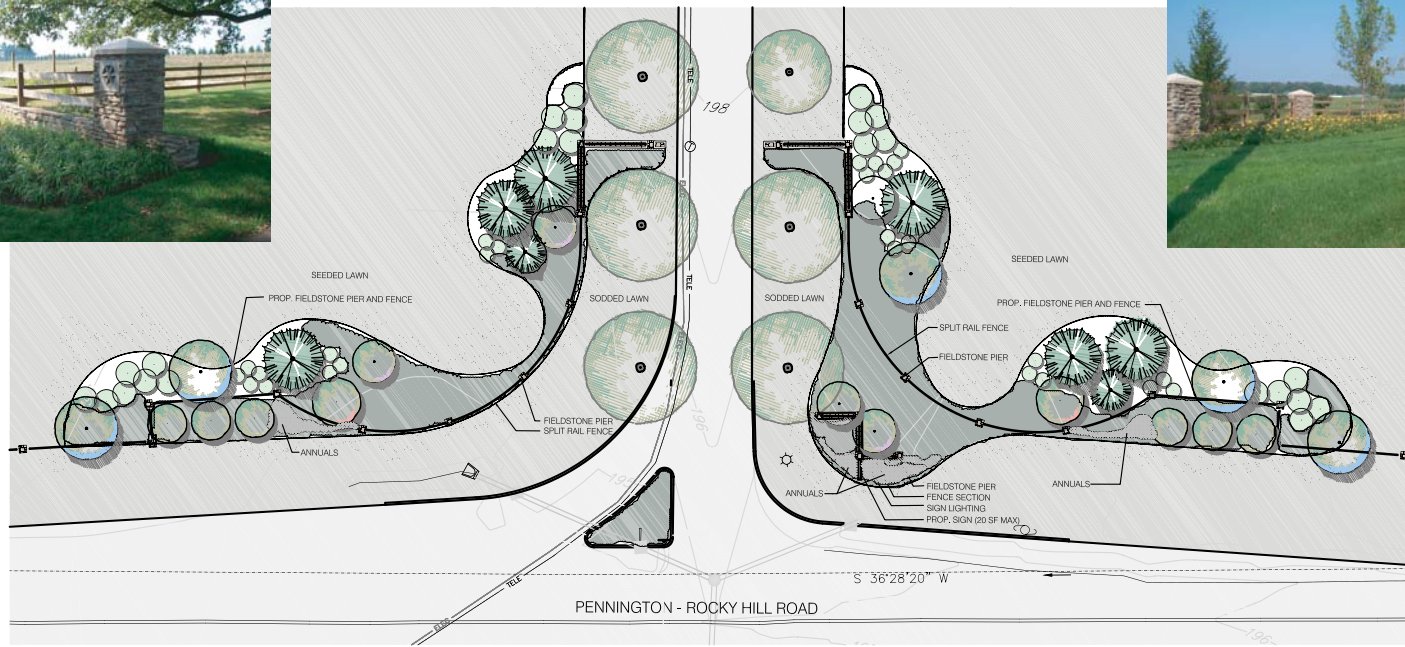


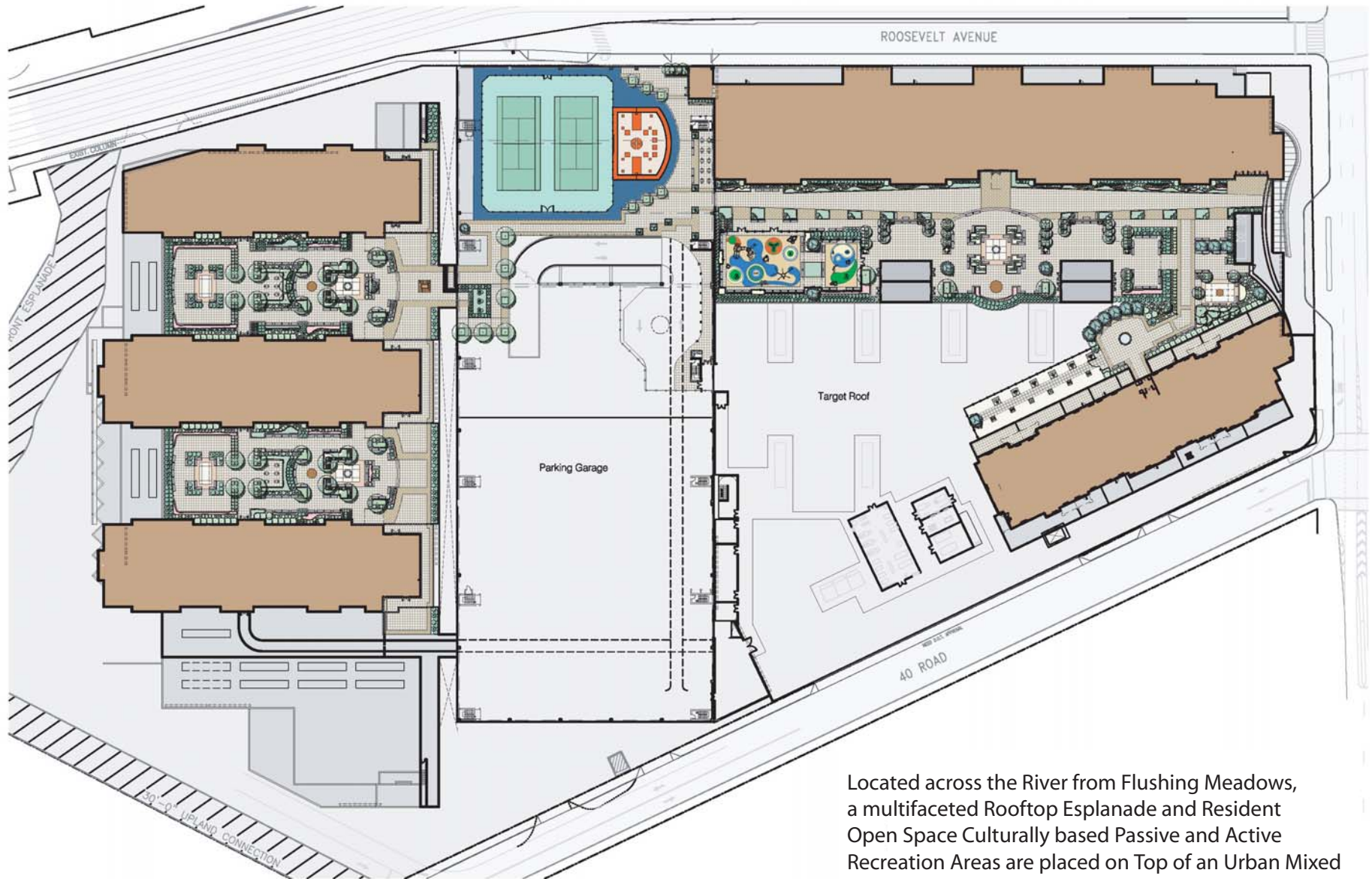
The 12 story mid-rise Apartment Building reinforces the boundary of the City Center while the 4 story Townhouses blend into the Existing Neighborhood at the edge of the Downtown.



Child Development Center

The Meandering Path System and a Variety of Surfaces and Plant Textures Enhance the Play and Learning Experience for Toddlers through School Age Kids for this Award Winning Day Care Center.





Proposed Site Plan

Located across the River from Flushing Meadows, a multifaceted Rooftop Esplanade and Resident Open Space Culturally based Passive and Active Recreation Areas are placed on Top of an Urban Mixed Use Complex which includes 1,200 Residential Apartments, more than 900,000 SF of Retail Space, and Parking for at least 1,700 Vehicles.



Perspective Rendering by The 7th Art



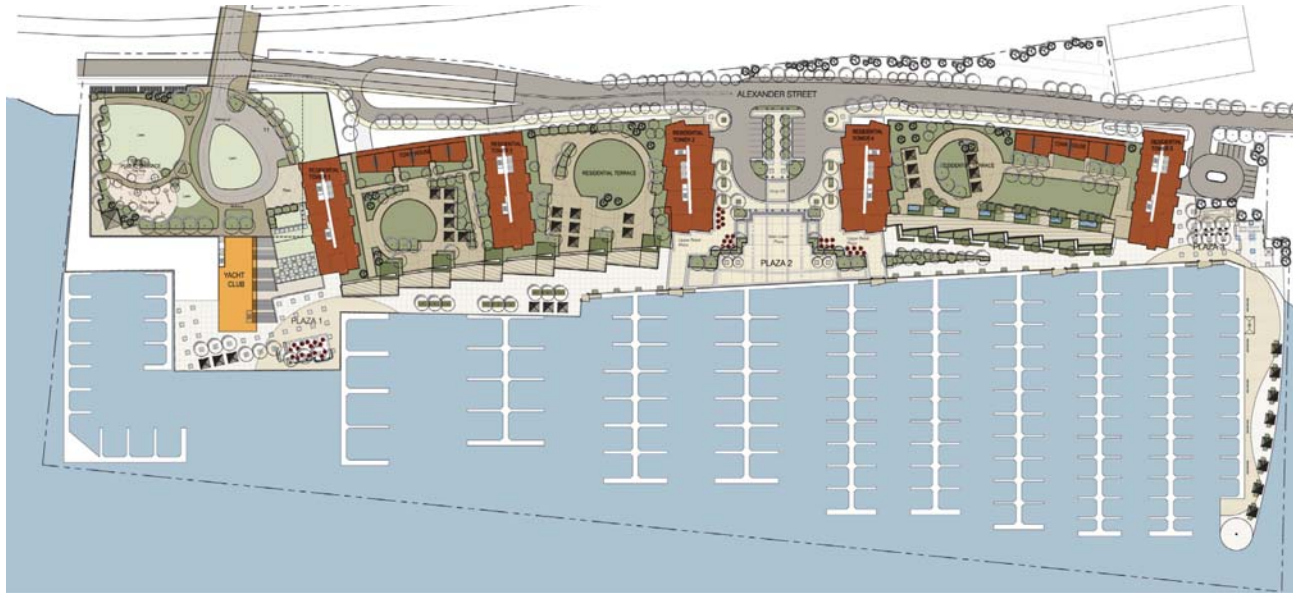
Perspective Rendering by The 7th Art



Perspective Rendering by The 7th Art







Proposed Site Plan



Perspective Vignette

Perspective by Perkins Eastman Architects



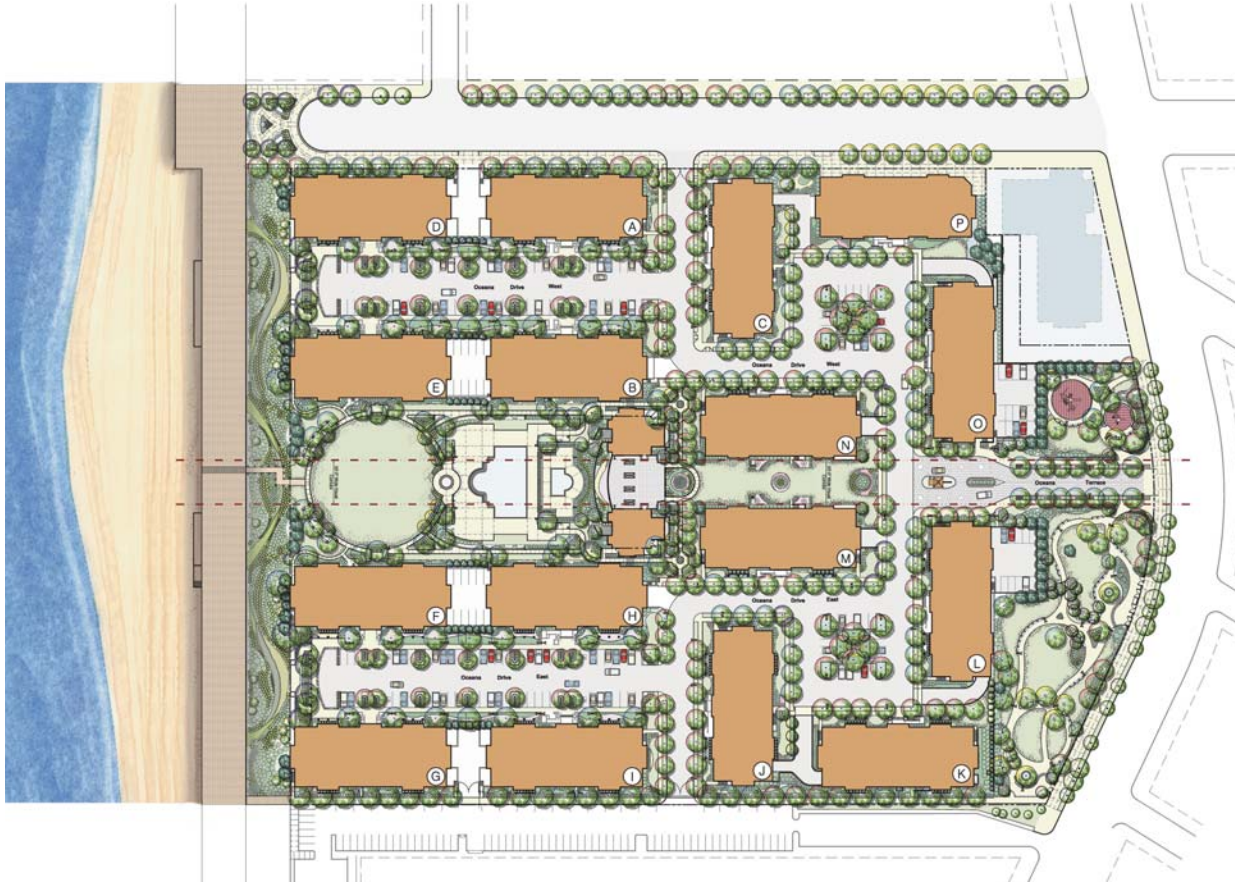
Recreation Center



Recreation Center Outdoor Pool



Tilyou Gardens - Public Open Space

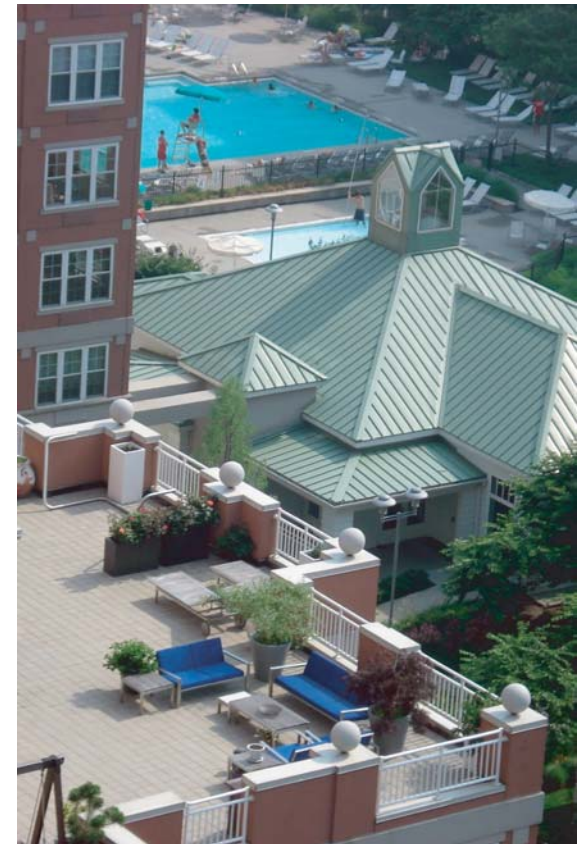


Proposed Site Plan

Detailed Mid-Rise Architecture and Highly Defined Landscape Spaces reinforces a true urban neighborhood for 865 Families within this Luxury Waterfront Residential Development located on the Boardwalk in Coney Island, Brooklyn, New York.

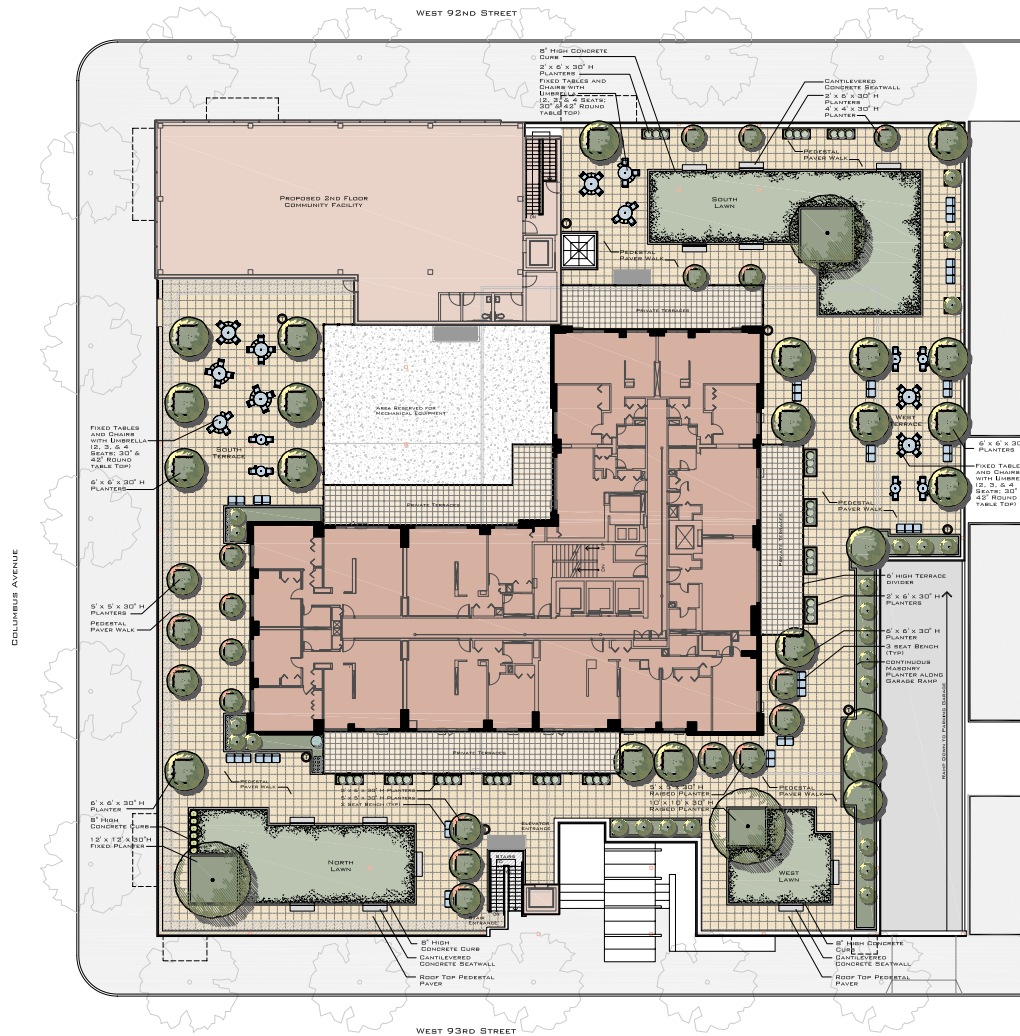


Main Entrance - Oceana Terrace





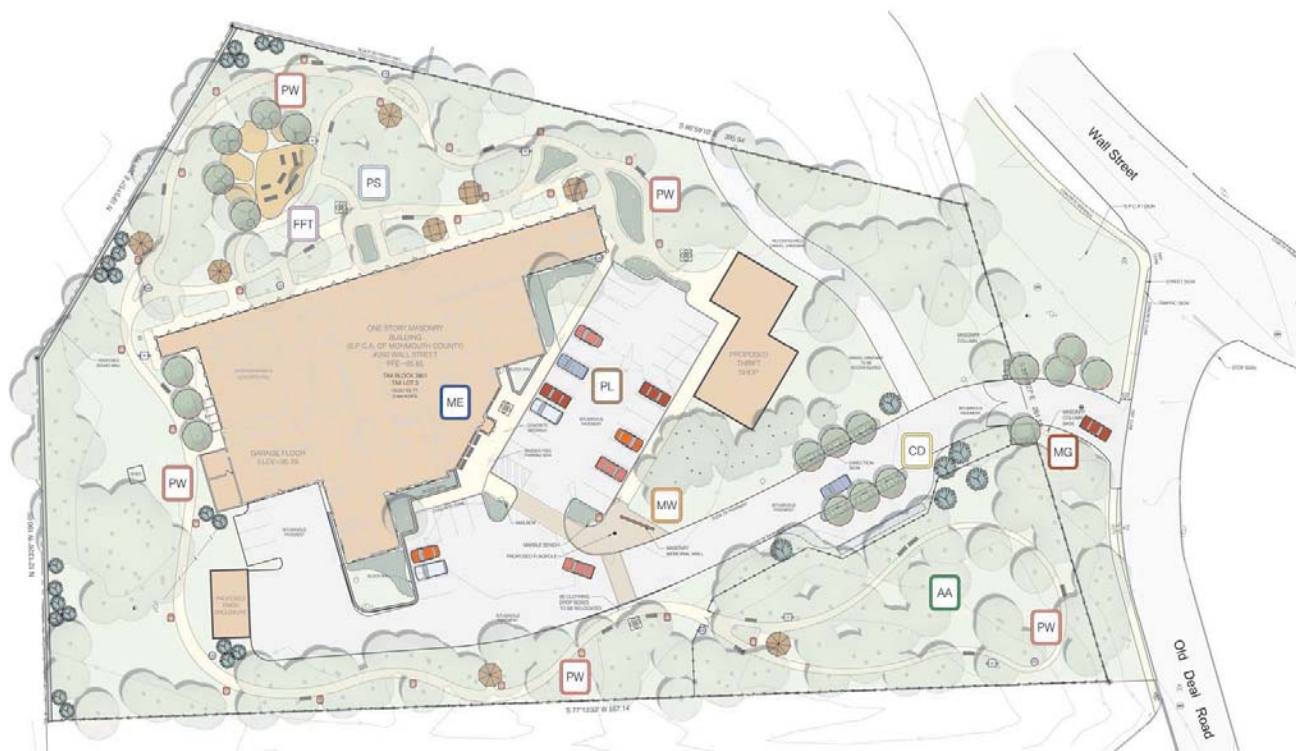
This 12th Floor Luxury Rooftop Terrace offers Spectacular Panoramic Ocean and Skyline Views on top of a Waterfront Residential Development located on the Boardwalk in Brighton Beach & Coney Island Avenues in Brooklyn, New York.



Proposed Site Plan



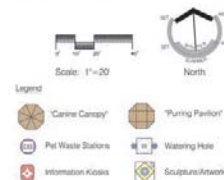
Located on West 93rd Street in New York this Upper West Side rooftop was delineated as Residential Open Space providing raised lawn panels for activities and moveable tables, chairs, and planters.



Key Site Amenities and Proposed Improvements

- | | | | | |
|---|---|--|--|--|
| MG Main Entrance Gate
New Entrance Gate
Front Door to SPCA Facility
Supplemental Landscaping
& Lighting | AA Agility Arena
Secure Fenced Area
Positive Activity Visible to Street
Agility Apparatuses
(ramp, tube, tires, jumps) | PW "Pawway"
Site Wide Walkway System
Information Kiosks & Benches
Watering Holes & Pet Waste Stations
Pawprint and Animal Silhouettes | MW Memorial Wall
Reconfigured Memorial Wall Area
New Paving, Seating, Flag Pole
Connection to Rainbow Bridge | CD Clothing Drop
Reconfigured Drop Off Area
Defined with Fence and Landscaping
Clear Vehicular Circulation |
| ME Main Entrance
Expanded Facility
New Facade and Visitors Center
Supplemental Landscaping
& Site Lighting | PL Parking Lot
Expanded Guest Parking
Improved Site Circulation
Enhanced Wayfinding | FFT Furry Friends Theater
Themed Outdoor Educational Facility
Seating for Group Lectures
Information Kiosks &
Interactive Components | PS Picture "Paw-Foot"
Photo Spot
Special Location for Photos
of Guests and Pets to take Home | |

"The Monmouth County SPCA site will be the hallmark for the care and welfare of animals as well as a destination for those seeking to learn about animals and the value they add to our lives..."



- Legend:
- Canine Campy
 - Pet Waste Stations
 - Information Kiosks
 - Purring Parlor
 - Watering Hole
 - Sculpture Network



A Thematic and Playful design approach guides this regional SPCA Facility to becoming an interactive Hallmark Destination for Animal Welfare, Education, and Adoption.

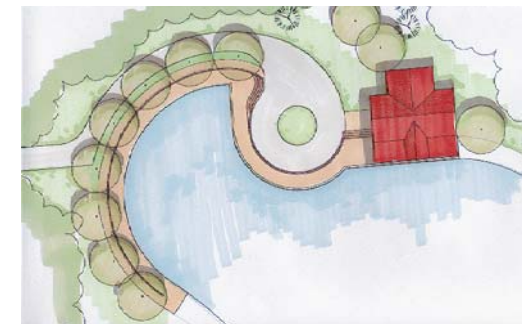
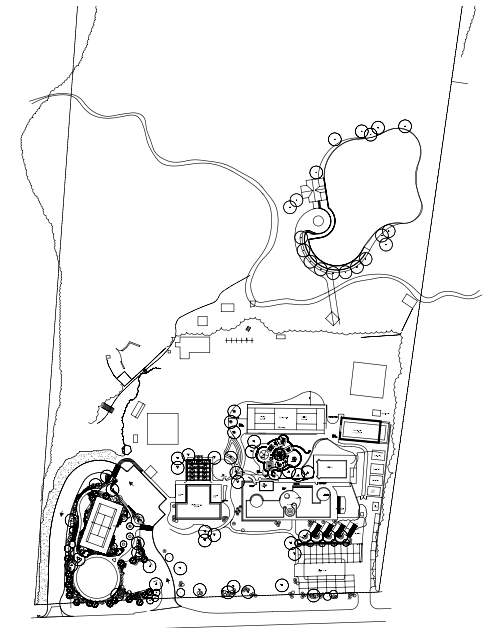


Plan View of Future Sport Courts



Plan View of Spray Ground

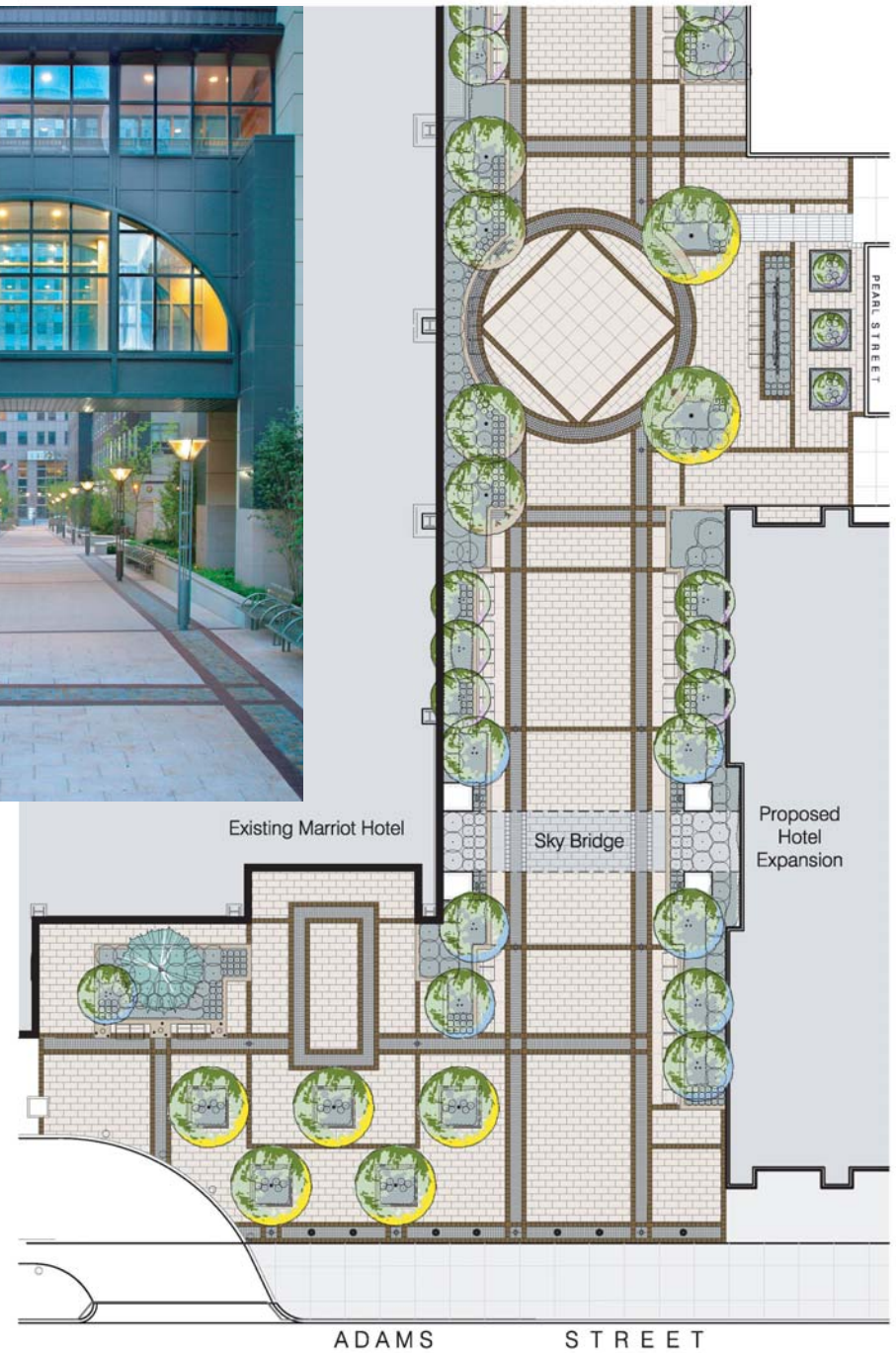
A privately owned Nursery School / Day Camp is located on 26.8 acres in Manalapan, New Jersey. This Master Plan incorporated meandering paths that lead to a variety of spaces such as a spray ground, pools, a future lake, playgrounds and sport courts.



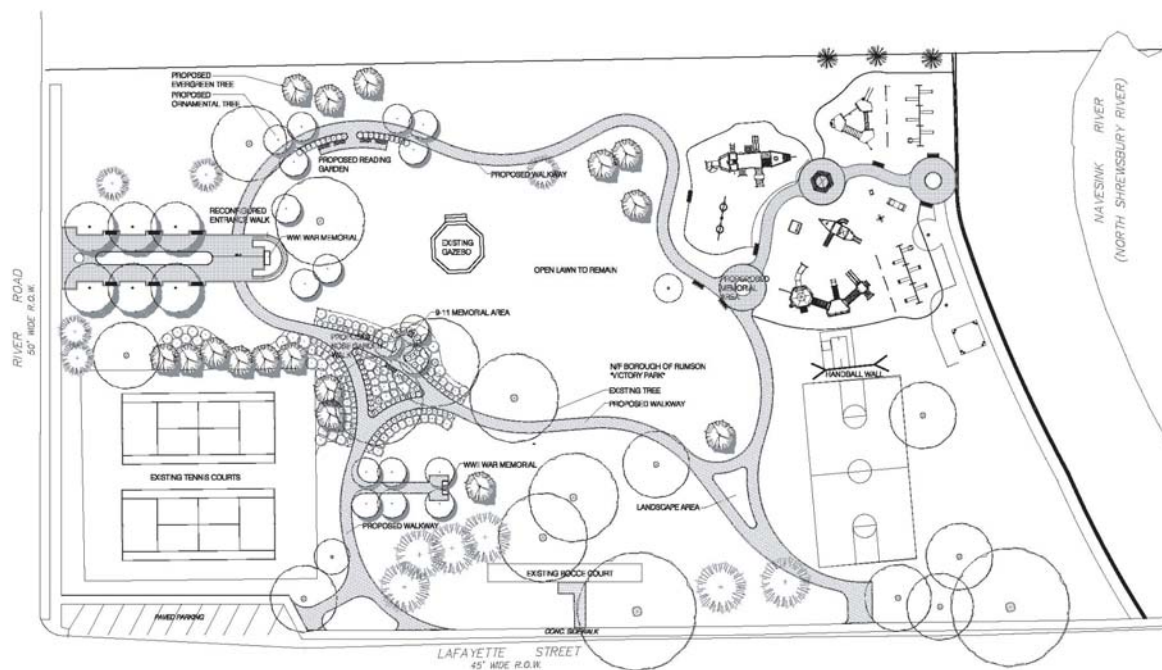
Plan View of Boat House



This Linear Urban Plaza/Courtyard serves as the Main Entrance and Streetscape to the 4 Star Marriott Hotel and 345 Adams Street and 355 Jay Street Offices as well as a Primary Pedestrian Conduit for thousands of Pedestrians traveling between Adams Street & Jay Street in the Heart of Downtown Brooklyn.







Teddy's Playground

A Privately Funded Public Park Renovation which incorporated a meandering paver walkway which leads to a variety of spaces including a Childrens' Playground, Reading Gardens, Historical Memorials and Sport Courts.